

ARTCC ARGENTINO AD 2.SAWH

NO VALIDO PARA NAVEGACION REAL. ADAPTADO PARA SU UTILIZACION EN UN AMBITO VIRTUAL
SAWH – USHUAIA / MALVINAS ARGENTINAS

AD 2.17 ESPACIO AEREO ATC

Zona de Control:

- | | | |
|-------------------------------------|-------------------------|--------|
| 1. Designación: | Zona de Control Ushuaia | |
| 2. Límites verticales: | <u>FL 105</u>
GND | |
| 3. Clasificación del espacio aéreo: | C | |
| 4. Distintivo de llamada: | USHUAIA TORRE | |
| 5. Altitud de transición: | 8000 FT. | |
| 6. Nivel de transición: | QNH de 977 a 994 | FL 100 |
| | QNH de 995 a 1013 | FL 095 |
| | QNH de 1014 a 1031 | FL 090 |
| | QNH de 1032 a 1050 | FL 085 |

Area de Control Terminal:

- | | |
|-------------------------------------|---|
| 1. Designación: | Area de Control Terminal Ushuaia |
| 2. Límites verticales: | <u>FL 450</u>
2000 FT |
| 3. Clasificación del espacio aéreo: | A: FL 450 / FL 195
B: FL 195 / FL 145
C: FL 145 / 2000 FT |
| 4. Distintivo de llamada: | USHUAIA TORRE |

AD 2.18 INSTALACIONES DE COMUNICACIONES ATS

SERVICIO	DISTINTIVO DE LLAMADA	FRECUENCIA	OBSERVACIONES
APP	Ushuaia Control	118.100	-

AD 2.19 CARTAS AERONAUTICAS

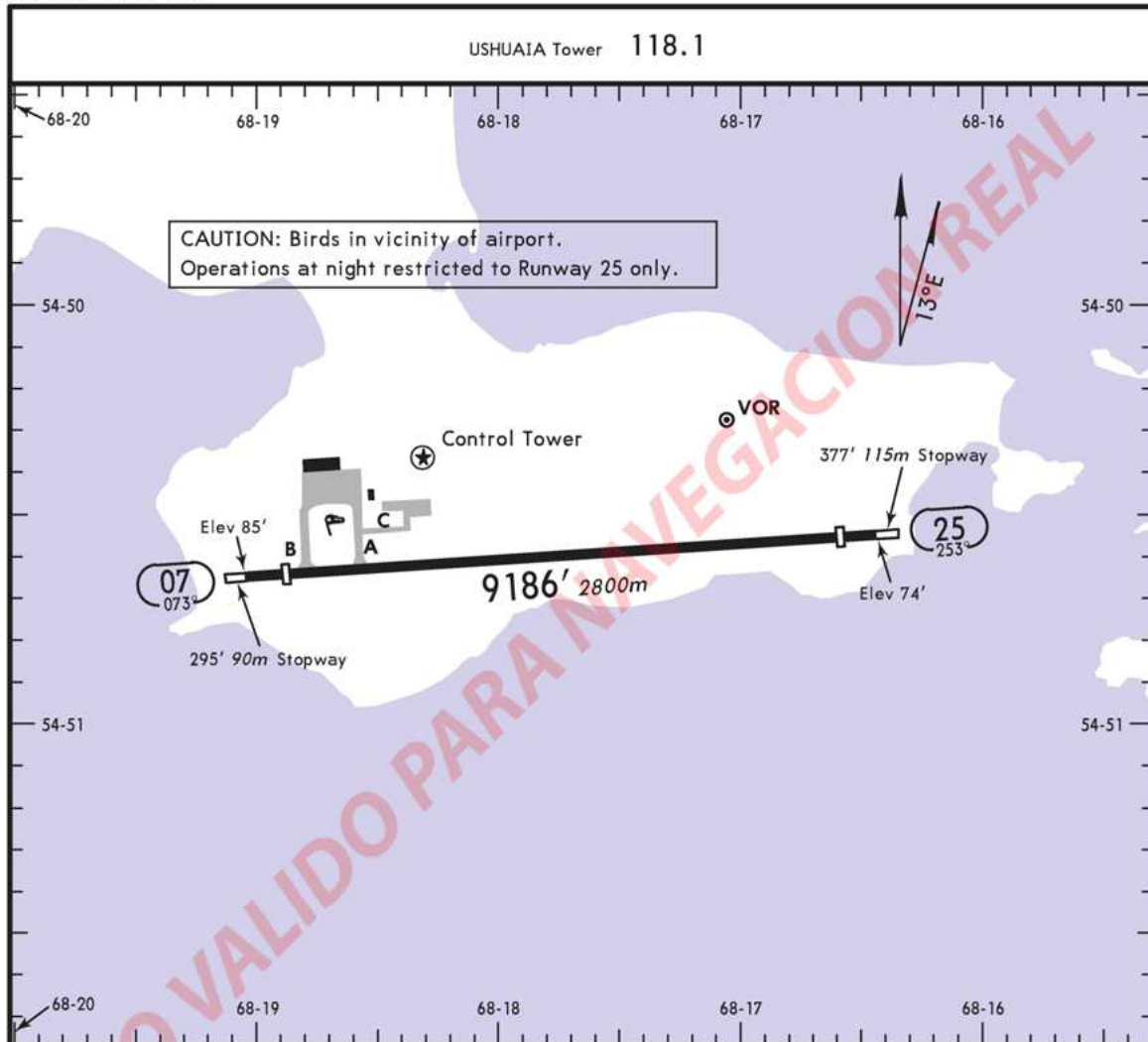
- | | |
|-----------------------|---|
| - Plano de aeródromo: | SAWH.APT |
| - Cartas IAC: | SAWH.IAC NO.1 RWY 25
SAWH.IAC NO.2 RWY 25
SAWH.IAC NO.3 RWY 25 (WITHOUT HOLD / SIN ESPERA)
SAWH.IAC NO.4 RWY 25
SAWH.IAC NO.5 RWY 07/25 VISUAL CIRCLING |
| - Cartas SID: | SAWH.SID PWL3
SAWH.SID USU2A
SAWH.SID USU2B |
| - Cartas STAR: | SAWH.STAR DABLI2 |

(DEJADO EN BLANCO INTENCIONALMENTE)

APT

SAWH
Apt Elev **102'**
S54 50.5 W068 17.7

USHUAIA, ARGENTINA
MALVINAS ARGENTINAS



ADDITIONAL RUNWAY INFORMATION

		USABLE LENGTHS			WIDTH
		LANDING BEYOND		TAKE-OFF	
RWY		Threshold	Glide Slope		
07	RL REIL PAPI-L	8596' 2620m			148'
25	RL REIL ❶ PAPI-L (angle 3.5°)	8661' 2640m		9560' 2914m	45m

① Do not use it outside 5.5 NM on Runway Centerline.

SAWH

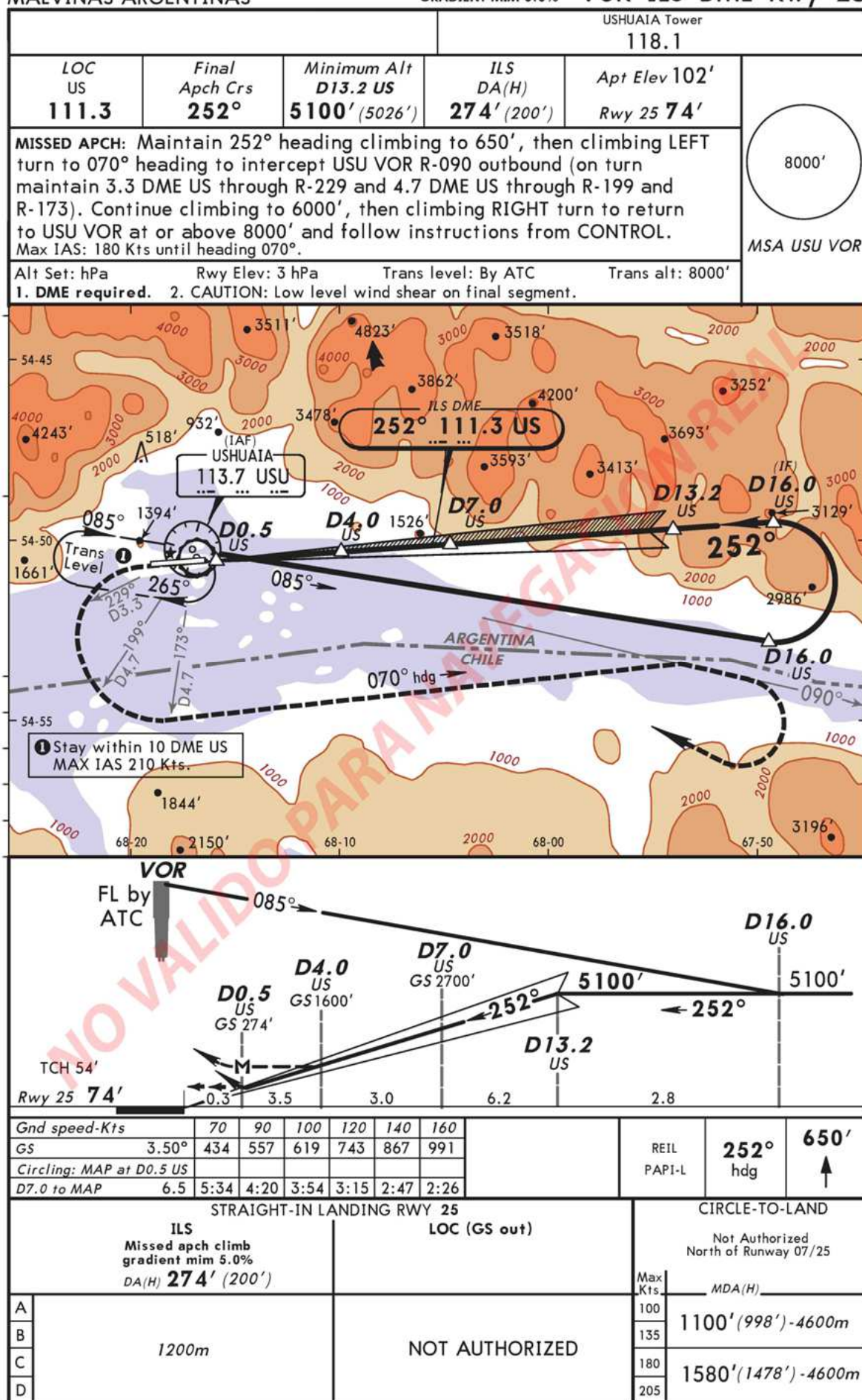
USHUAIA, ARGENTINA

No.1

MALVINAS ARGENTINAS

MISSED APCH CLIMB
GRADIENT MIN 5.0%

VOR ILS DME Rwy 25



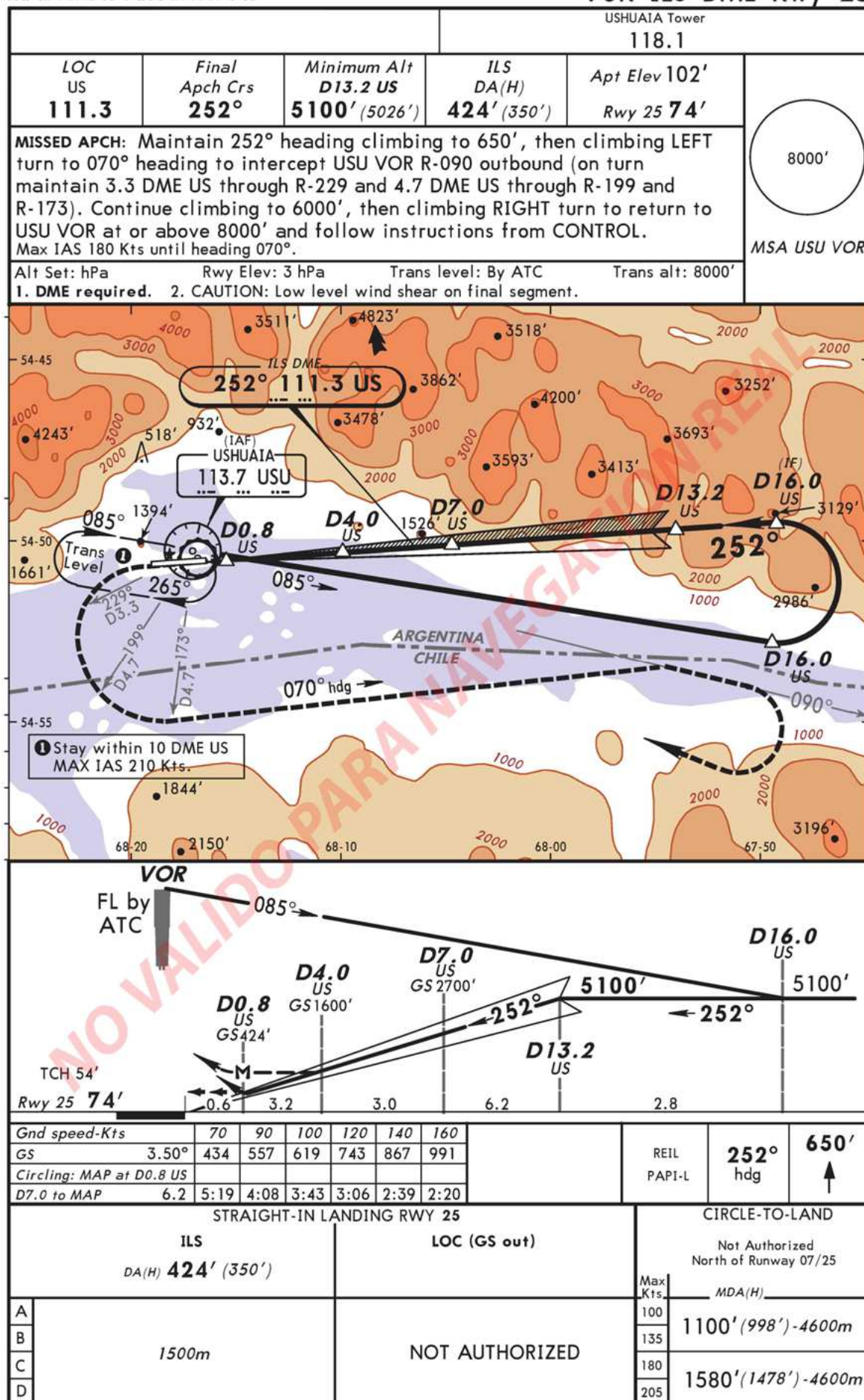
SAWH

USHUAIA, ARGENTINA

No. 2

MALVINAS ARGENTINAS

VOR ILS DME Rwy 25



IAC NO.3 RWY 25 (WITHOUT HOLD / SIN ESPERA)

SAWH

USHUAIA, ARGENTINA

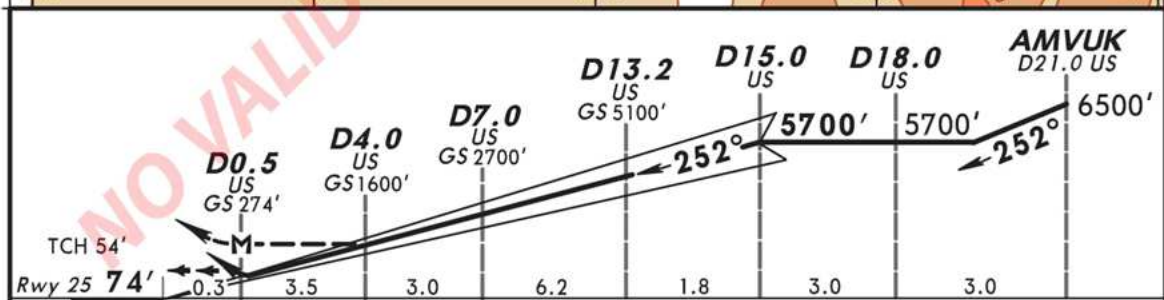
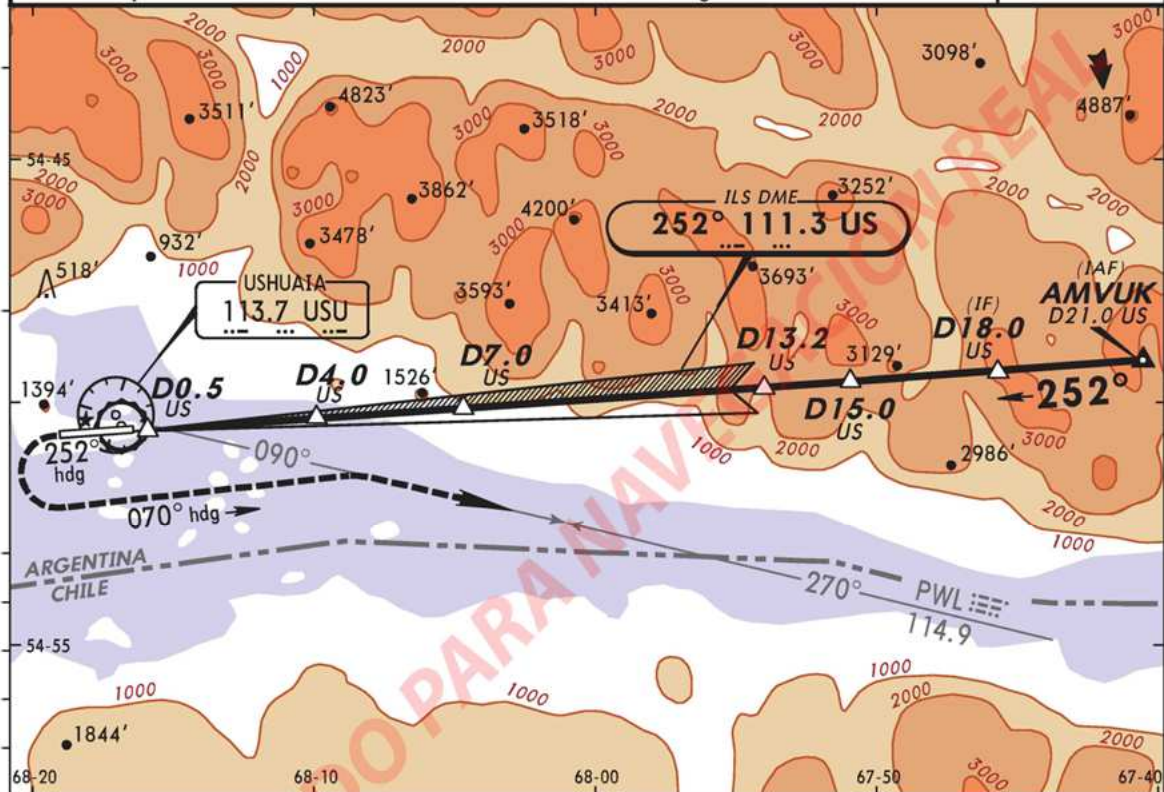
FROM AMVUK No. 3

MALVINAS ARGENTINAS

MISSED APCH CLIMB
GRADIENT MIN 5.0%

ILS DME Rwy 25

				USHUAIA Tower	
				118.1	
LOC US 111.3	Final Apch Crs 252°	Minimum Alt D15.0 US 5700' (5626')	ILS DA(H) 274' (200')	Apt Elev 102' Rwy 25 74'	<div>8000'</div> <div>MSA USU VOR</div>
MISSED APCH: Maintain 252° heading climbing to 650', then climbing LEFT turn to 070° heading to intercept USU VOR R-090 outbound or PWL VOR R-270 inbound. Continue climbing to 8000' and follow instructions from CONTROL. Max IAS: 180 Kts until heading 070°.					
Alt Set: hPa Rwy Elev: 3 hPa Trans level: By ATC Trans alt: 8000'					
1. DME required. 2. CAUTION: Low level wind shear on final segment.					



Gnd speed-Kts	70	90	100	120	140	160			REIL	252°	650'
GS	3.50°	434	557	619	743	867	991			PAPI-L	↑
Circling: MAP at D0.5 US											
D7.0 to MAP	6.5	5:34	4:20	3:54	3:15	2:47	2:26				

STRAIGHT-IN LANDING RWY 25				CIRCLE-TO-LAND	
ILS Missed apch climb gradient min 5.0% DA(H) 274' (200')		LOC (GS out)		Not Authorized North of Runway 07/25	
				Max Kts	MDA(H)
				100	1100' (998') - 4600m
				135	
				180	1580' (1478') - 4600m
				205	

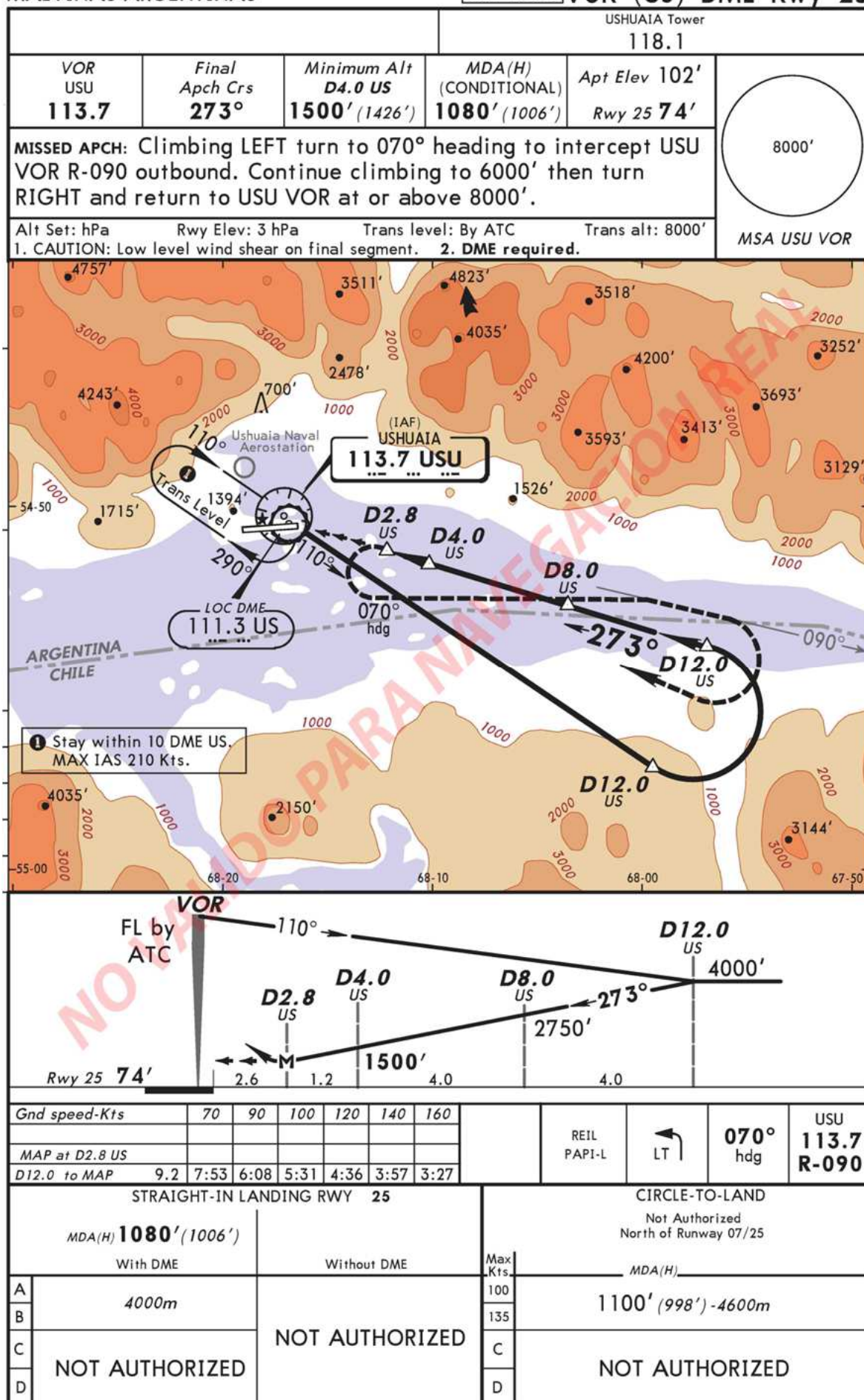
SAWH

USHUAIA, ARGENTINA

No. 4

MALVINAS ARGENTINAS

CAT A & B VOR (US) DME Rwy 25

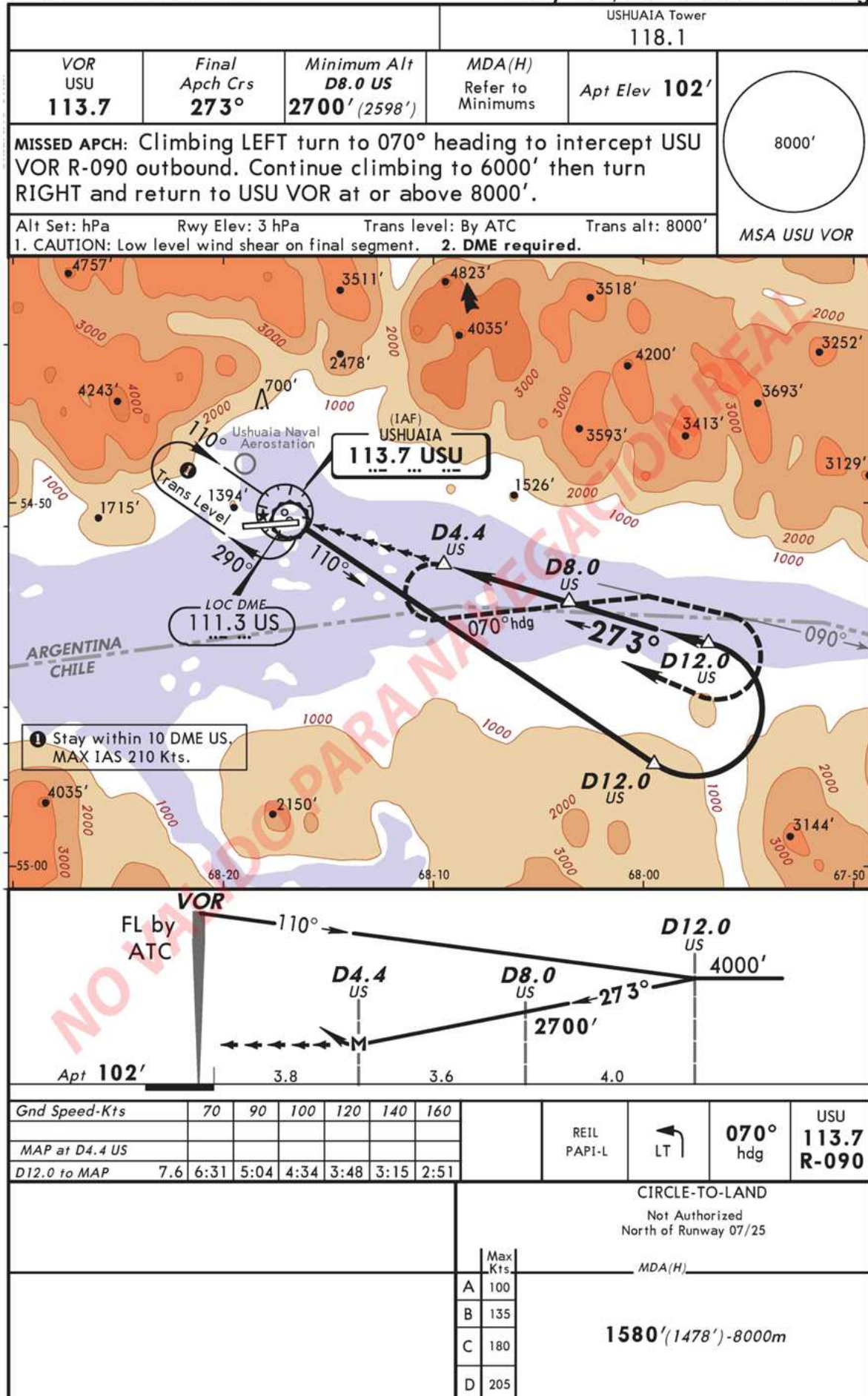


IAC NO.5 RWY 07/25 VISUAL CIRCLING

SAWH

MALVINAS ARGENTINAS

USHUAIA, ARGENTINA
No. 5 VOR (US) DME
Rwy 07/25 Visual Circling



SAWH
MALVINAS ARGENTINAS

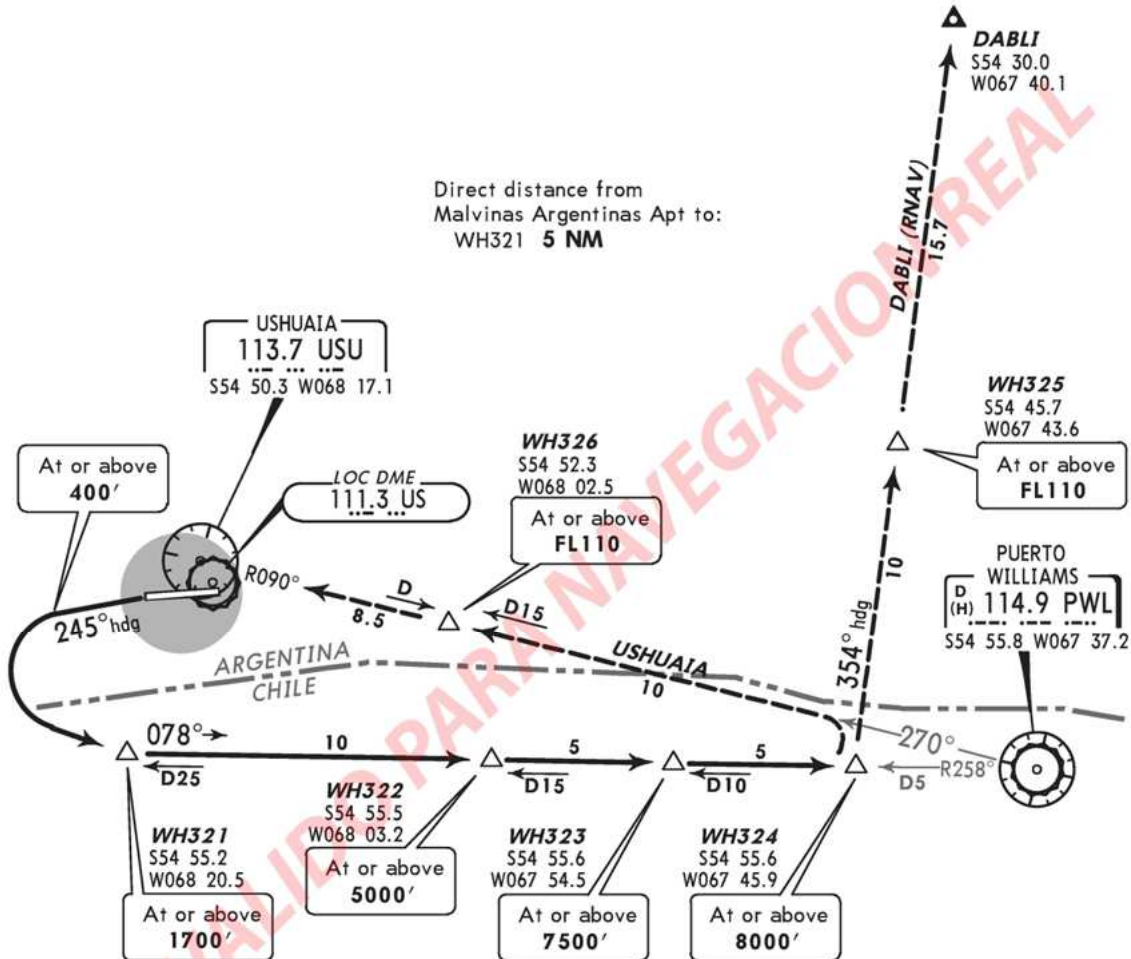
USHUAIA, ARGENTINA

SID

Apt Elev
102'Trans level: By ATC Trans alt: 8000'
DABLI transition: Only with RNAV equipment.

8000'

MSA USU VOR

WILLIAMS 3 DEPARTURE
(RWY 25)Direct distance from
Malvinas Argentinas Apt to:
WH321 **5 NM**

This SID requires the following take-off minimums:
Ceiling Not required, Visibility 800m, and minimum
climb gradient of: 5.3% to **FL110**.

Gnd speed-KT	75	100	150	200	250	300
5.3% V/V (fpm)	403	537	805	1073	1342	1610

INITIAL CLIMB

After take-off **MAINTAIN** runway heading, then proceed on a 245° heading to **400'**; then climbing LEFT turn to WH321 (intercept PWL R-258) climbing to WH324.

TRANSITIONS**DABLI (RNAV)**

- A. Turn LEFT heading 354° to DABLI.
B. With aircraft holding at EDPAN, reach at or above **FL110**, at WH325 in accordance with instructions from ATC.

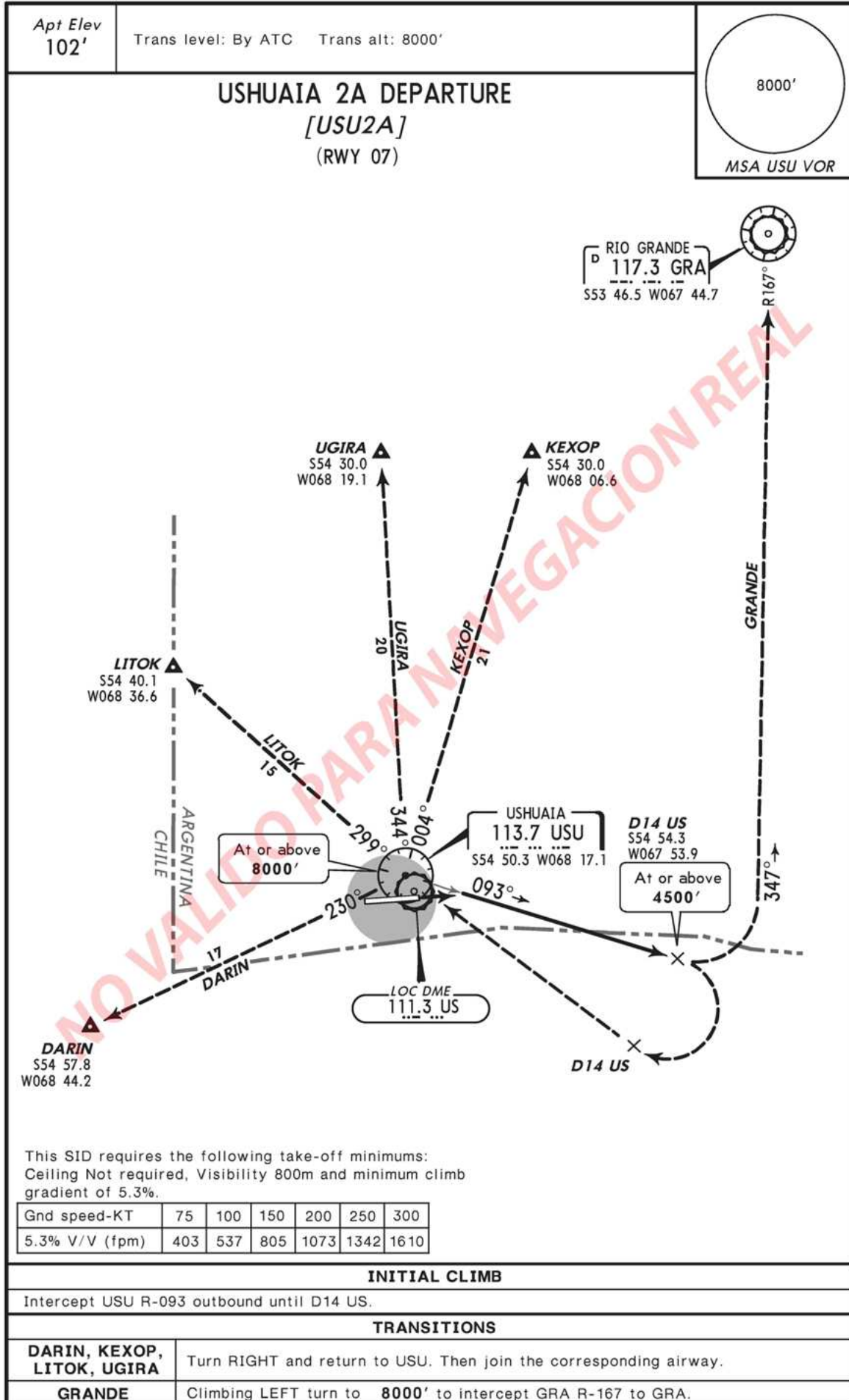
USHUAIA

- A. Turn LEFT to intercept PWL R-270 or USU R-090 to USU.
B. With aircraft over USU, reach at or above **FL110**, at WH326, D15 PWL or D8.5 US in accordance with instructions from ATC.

SID USU2A

SAWH
MALVINAS ARGENTINAS

USHUAIA, ARGENTINA
SID



SAWH
MALVINAS ARGENTINAS

USHUAIA, ARGENTINA

SID

Apt Elev
102'

Trans level: By ATC Trans alt: 8000'

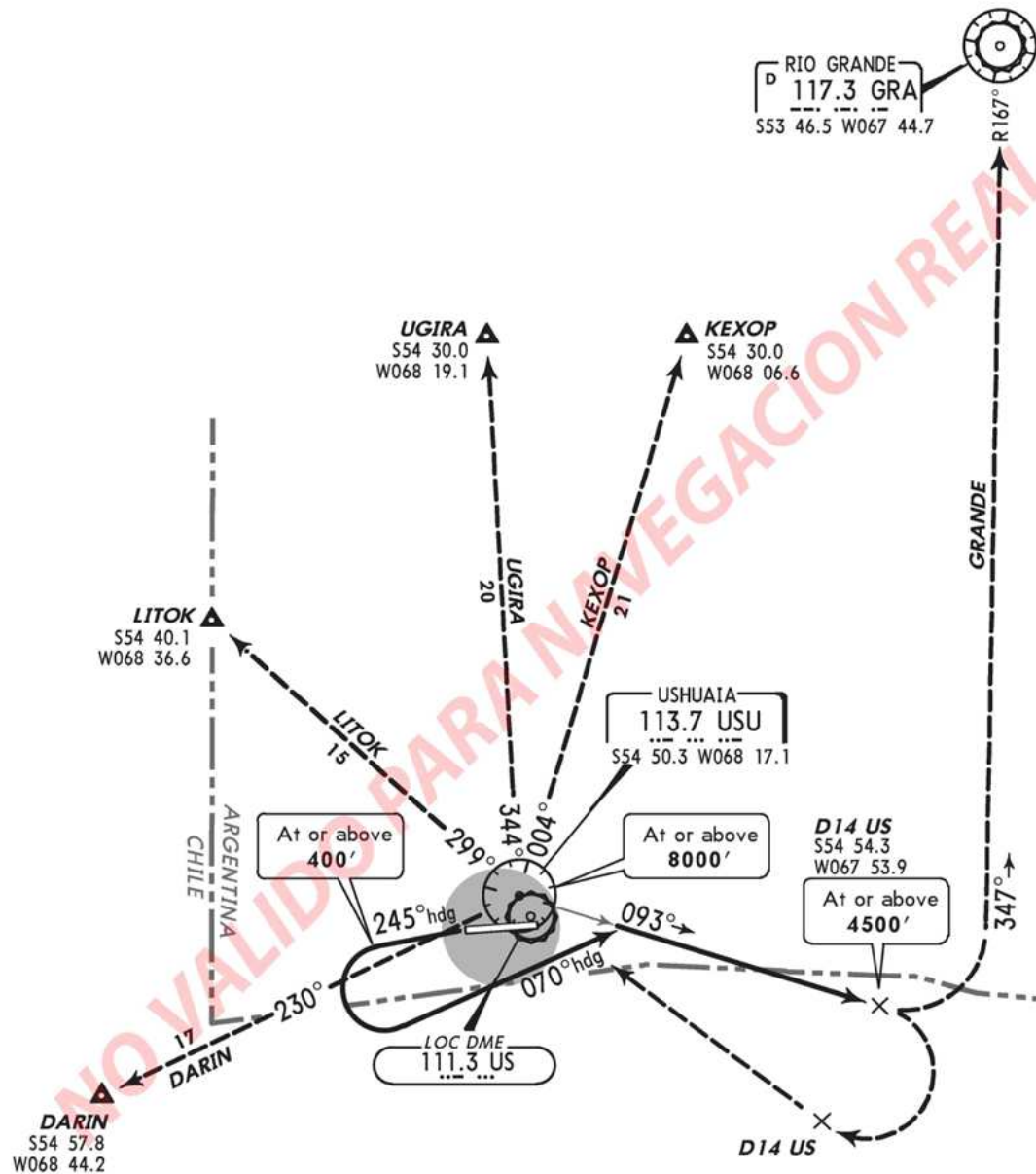
USHUAIA 2B DEPARTURE

[USU2B]

(RWY 25)

8000'

MSA USU VOR



This SID requires the following take-off minimums:
Ceiling Not required, Visibility 800m and minimum climb gradient of 5.3%.

Gnd speed-KT	75	100	150	200	250	300
5.3% V/V (fpm)	403	537	805	1073	1342	1610

INITIAL CLIMB

After take-off **MAINTAIN** runway heading, then proceed on a 245° heading to **400'**, then turn LEFT climbing on a 070° heading to intercept USU R-093 to D14 US.

TRANSITIONS

DARIN, KEXOP, LITOK, UGIRA	Turn RIGHT and return to USU. Then join the corresponding airway.
GRANDE	Climbing LEFT turn to 8000' to intercept GRA R-167 to GRA.

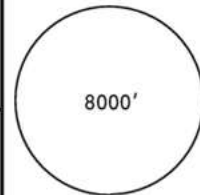
STAR DABLI2

SAWH
MALVINAS ARGENTINAS

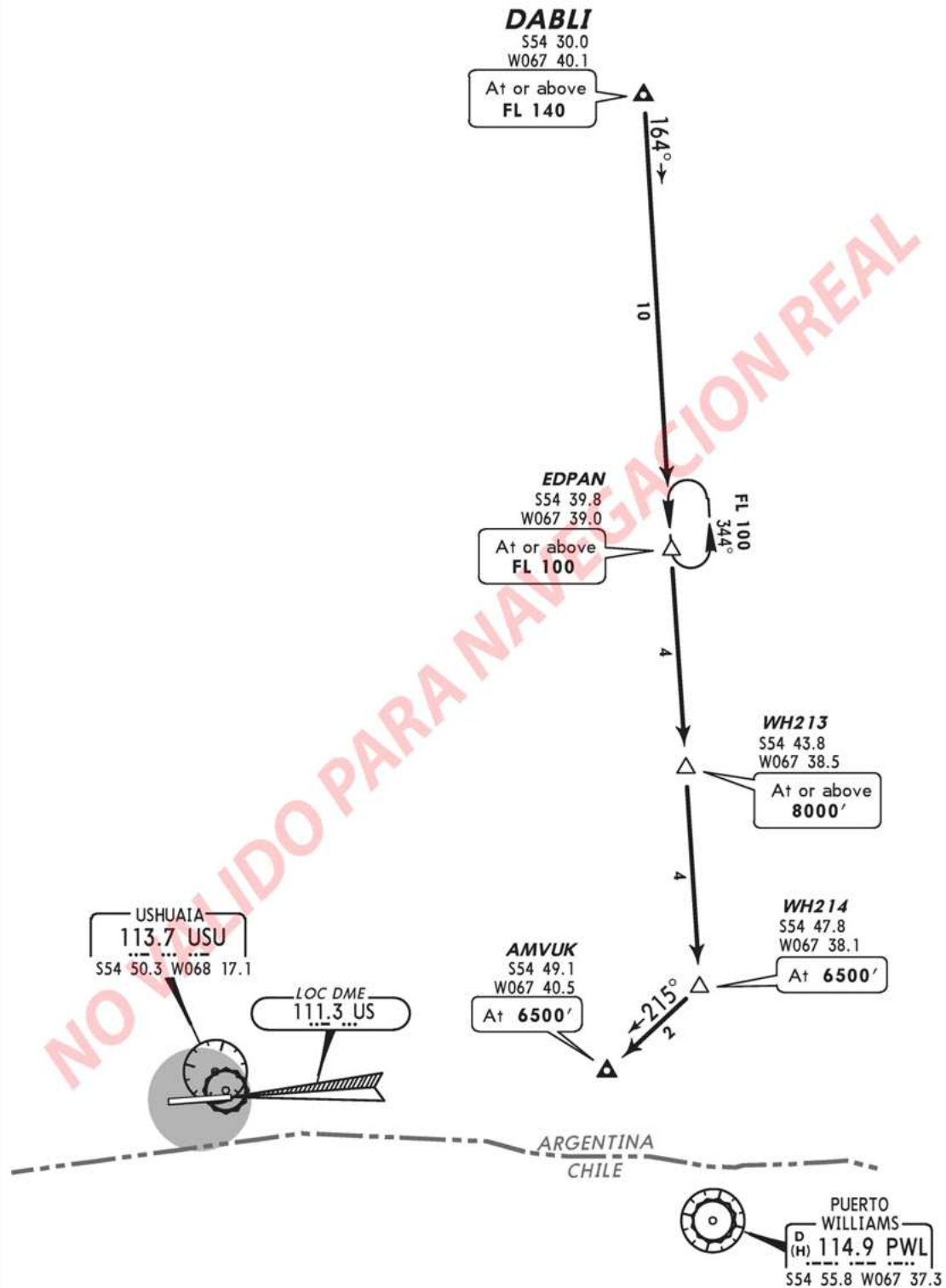
USHUAIA, ARGENTINA
RNAV STAR

Apt Elev
102'

Alt Set: hPa Trans level: By ATC Trans alt: 8000'
1. RNP 1 required.
2. GNSS required.
3. RADAR not required.



DABLI 2 ARRIVAL
(RWY 25)



Direct distance from AMVUK to:
Malvinas Argentinas Apt 22 NM